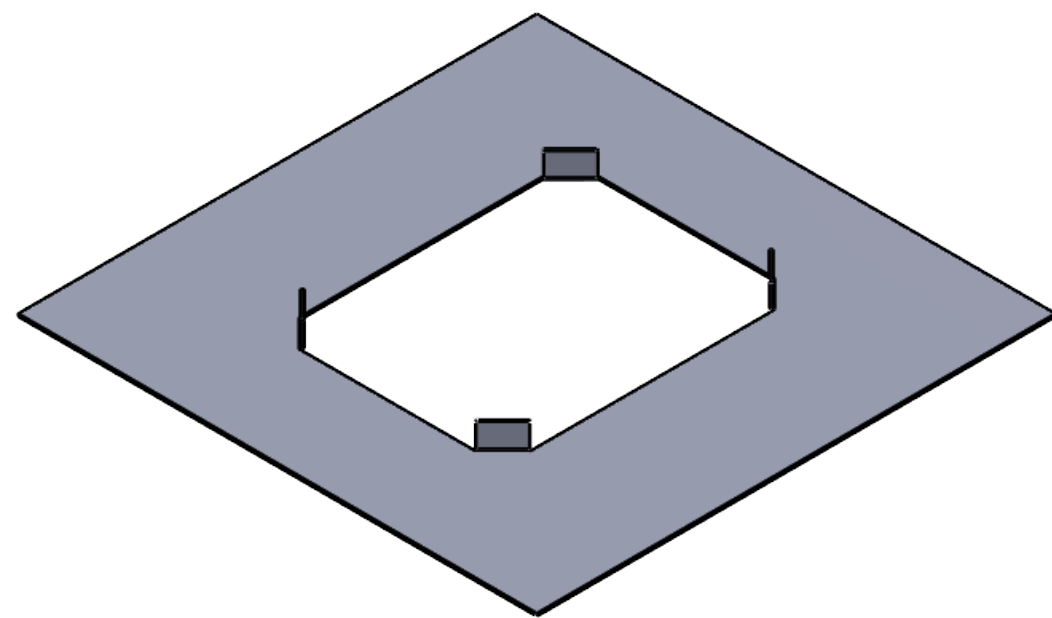
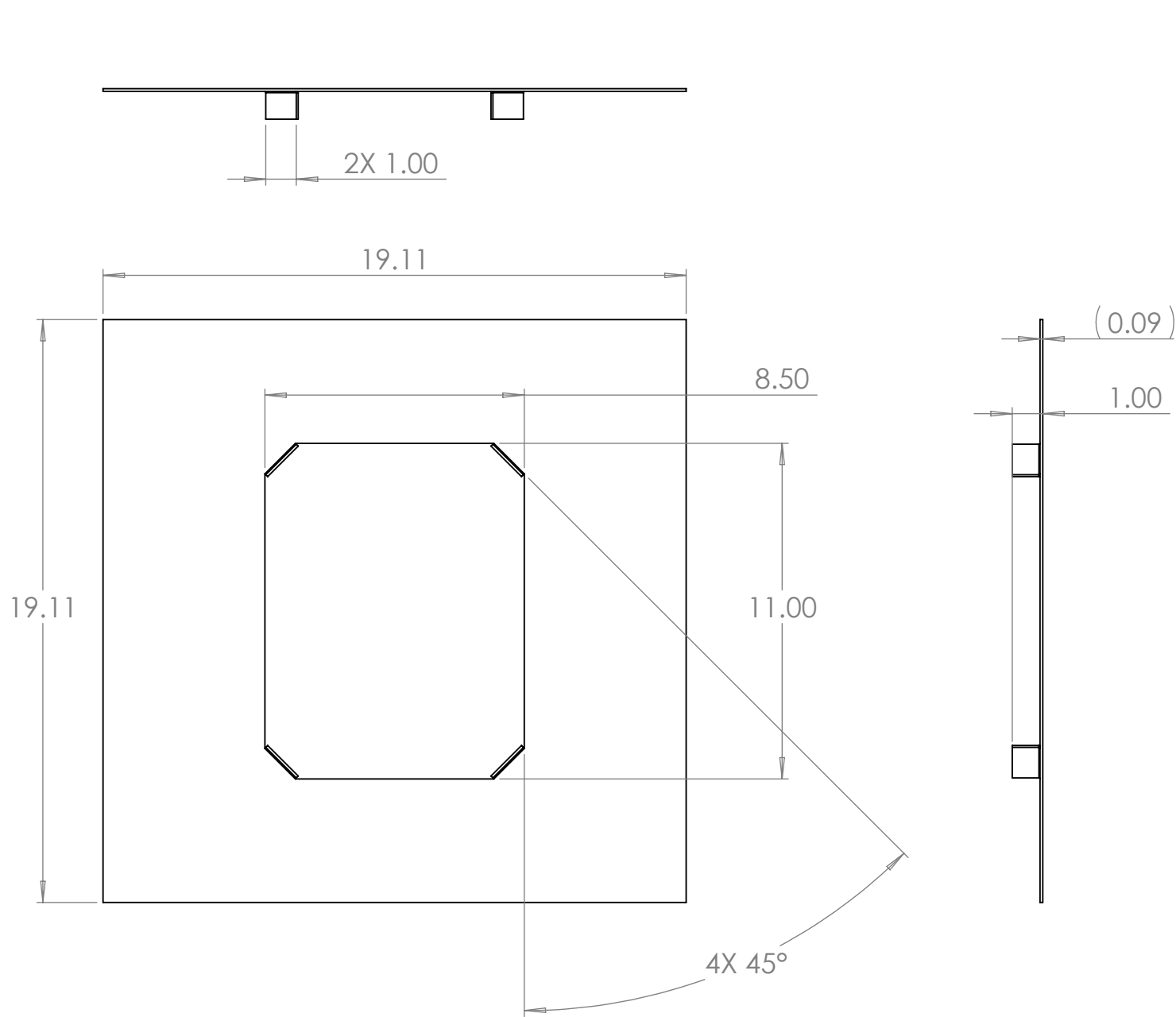


4321

B



B

A

- NOTES: UNLESS OTHERWISE SPECIFIED.
1. PARAMETRIC MODEL. ALL DIMENSIONS FURTHER SPECIFIED IN 003-00049.
 2. FLAT PATTERN FOR PART SPECIFIED ON LAST SHEET OF DRAWING.
 3. PART SHALL BE FREE OF ANY SHARP EDGES AND BURRS.
 4. PART TO BE CLEANED OF ALL OIL AND DEBRIS.
 5. MATERIAL: A1008 STEEL
 6. FINISH: NONE
 7. GAUGE: 13
 8. PART SHALL NOT BE MODIFIED BY ANY PARTY OUTSIDE PAPERLESS PARTS, INC UNLESS WRITTEN OR EXPRESS APPROVAL HAS BEEN PERMITTED FOR THE PART.

A

PROPRIETARY AND CONFIDENTIAL

THE INFORMATION CONTAINED IN THIS DRAWING IS THE SOLE PROPERTY OF PAPERLESS PARTS, INC. ANY REPRODUCTION IN PART OR AS A WHOLE WITHOUT THE WRITTEN PERMISSION OF PAPERLESS PARTS, INC IS PROHIBITED.

UNLESS OTHERWISE SPECIFIED:	
DIMENSIONS ARE IN INCHES TOLERANCES: ANGULAR: MACH ± 1.0° BEND ± 0.5° ONE PLACE DECIMAL ± 0.1 TWO PLACE DECIMAL ± 0.05	
INTERPRET GEOMETRIC TOLERANCING PER: ASME Y14.5	
MATERIAL A1008 STEEL	
FINISH	NONE
DO NOT SCALE DRAWING	

NAME	DATE
NM	8/30/2024
COMMENTS:	

TITLE: SHELF, IFU RACK, FULL SERVER RACK		
SIZE B	DWG. NO. 003-00049	REV 000
SCALE: NTS	WEIGHT: SEE MODEL	SHEET 1 OF 2

321

4

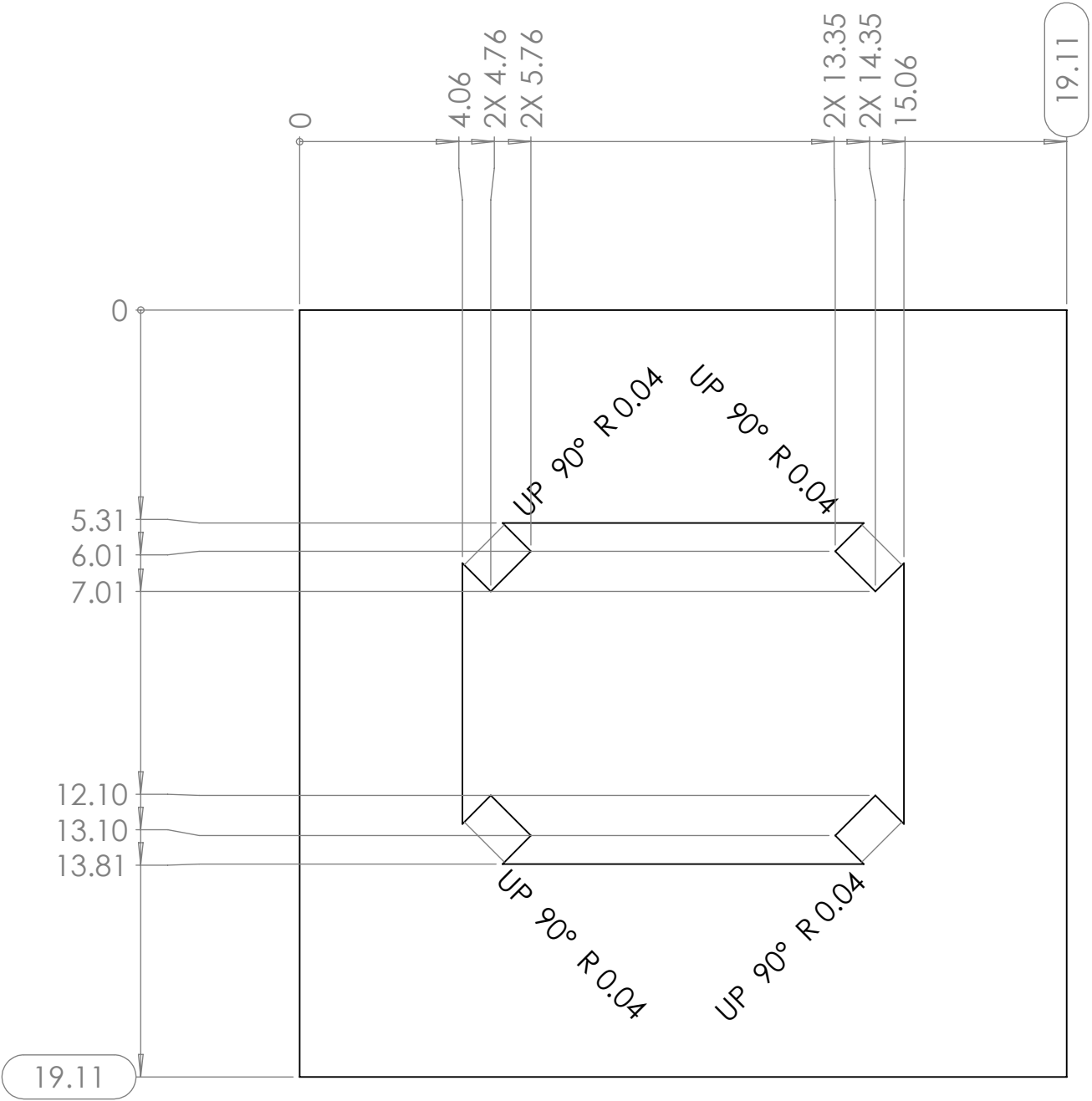
3

2

1

B

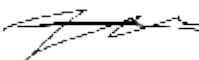
B



A

A

PROPRIETARY AND CONFIDENTIAL
THE INFORMATION CONTAINED IN THIS
DRAWING IS THE SOLE PROPERTY OF
PAPERLESS PARTS, INC. ANY
REPRODUCTION IN PART OR AS A WHOLE
WITHOUT THE WRITTEN PERMISSION OF
PAPERLESS PARTS, INC IS
PROHIBITED.

UNLESS OTHERWISE SPECIFIED:		NAME	DATE	<div><div></div><div>paperlessPARTS</div><div></div></div>		
DIMENSIONS ARE IN INCHES		DRAWN	NM	TITLE: SHELF, IFU RACK, FULL SERVER RACK		
TOLERANCES:		CHECKED				
ANGULAR: MACH± 1.0°		ENG APPR.				
BEND ± 0.5°		MFG APPR.				
ONE PLACE DECIMAL ± 0.1				SIZE DWG. NO. REV B 003-00049 000		
TWO PLACE DECIMAL ± 0.05						
INTERPRET GEOMETRIC TOLERANCING PER: ASME Y14.5		Q.A.				
MATERIAL		<div>COMMENTS:</div> <div></div>		SCALE: NTS		
A1008 STEEL				WEIGHT: SEE MODEL		
FINISH				SHEET 2 OF 2		
NONE						
DO NOT SCALE DRAWING						

3

2

1